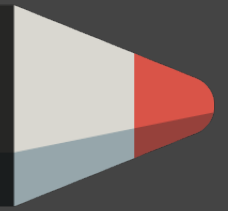


CREALESSESSON



MADE FOR TEACHERS

Official : <https://crealession.com>

Freemium Version : <https://gum.co/crealessionfree>

Pro Version : <https://gum.co/crealession>

Changes Log : Version History

Youtube : How to's Video Tutorial Channel

Description : Crealession is Yet Another Presentation App. Prepare Multiboard Presentations for Classes or Digital Lessons. Colorful Pens, Markers, Display Mouse and Keyboard Actions in Right order On Screen.

Contents

• FEATURES / HIGHLIGHTS.....	2
• Mouse & Keyboard Combination Display On Screen.....	3
• MultiBoard Presentation.....	4
• MultiBoard Presentation.....	5
• Q: How can I set font size of Text ?.....	6
• Q: How can I Haze Focus On Screen ?.....	6
• Frequently Asked Questions.....	6
• Q: How to duplicate a board ?.....	6
• Q: How to Insert Graphics ?.....	7
• Frequently Asked Questions.....	7
• Q: How can I set font size of Text ?.....	8
• Q: How can I Haze Focus On Screen ?.....	8
• Frequently Asked Questions.....	8
• Q: For whom Crealession For ?.....	8
• Frequently Asked Questions.....	9
• Q: Is Pro License for One PC ?.....	9
• Frequently Asked Questions.....	10
• Q: Computer License Registration Failed. What should I do know ?.....	10
• SHORTCUTS.....	11

FEATURES / HIGHLIGHTS

- Mouse & Keyboard Combination Display On Screen
(multi-language customizable key label support)
- MultiBoard Presentation (Use your Monitor as chalkboard)
(Right Mouse swap left & right for new board page!)
- Draw On Screen (Freehand,Line,Frame,Box,Circle,Disc)
- HazeFocus On Screen (Exciting Focus Effect !)

Document Last Updated on : June 1, 2020 2:15 AM



Mouse & Keyboard Combination Display On Screen

By default, F12 Key is assigned to Toggle on/off to show Keyboard Mouse On Screen Display.

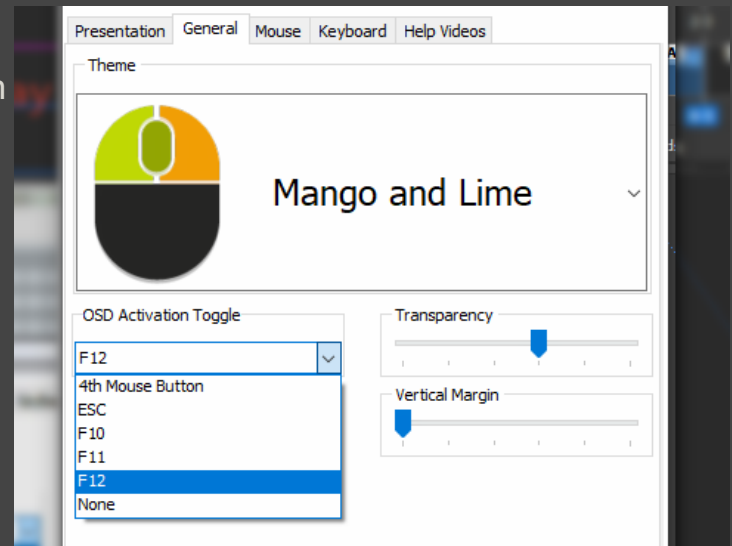
There is alternative Keys you can choose.

Many OSD Themes exists you can choose to.

By the way, you can design your own Theme.

(Help Menu > Design Theme..).

Last two themes in the Theme list is always reversed to Custom Theme. You can select your custom theme at the end of the theme.

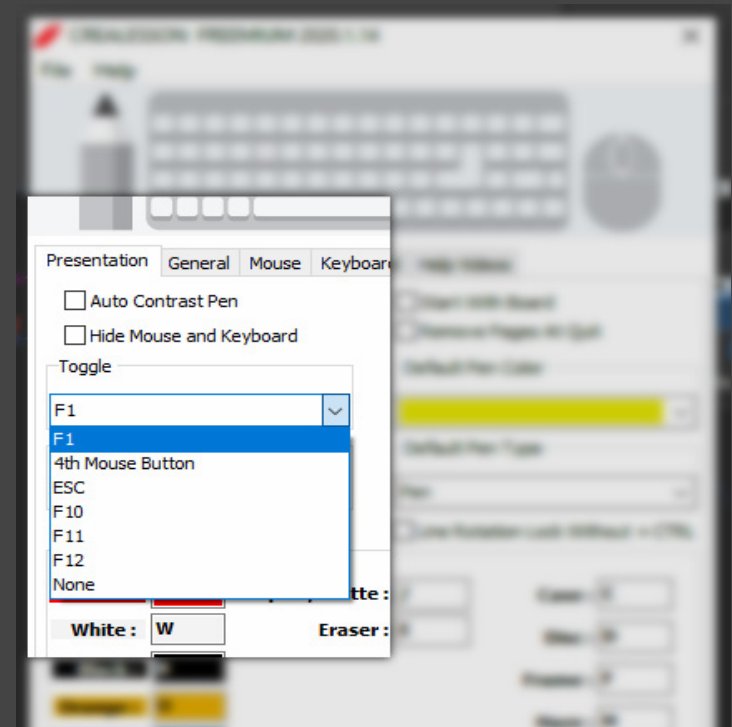


By default, F1 Key is assigned to Toggle Enter Presentation Mode on/off.

There are alternative Keys you can choose.

-While Presentation is On-

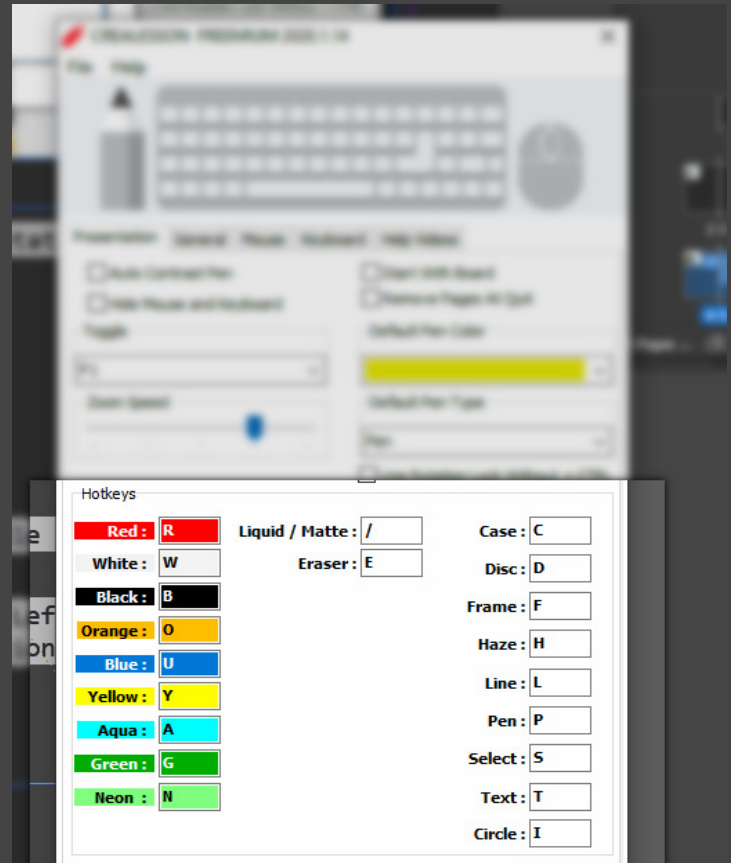
- Mouse Wheel Zooms in/out.
- Right Mouse Button to scroll the Page.
Spacebar+Left Mouse Button also scrolls the Page.
- Middle Mouse Button (Pressing on Mouse Scroll is Middle Mouse Button) zooms out to Actual Size 100%.
- If Actual Size is 100%, Right Mouse button and Swipe Left or Right Creates a New Blank Page. So you can prepare multiple presentation Pages.



MultiBoard Presentation

-In Presentation Mode (F1 Key)-

- Press H and Draw a rectangle to focus that zone.
- eg. Press in order L, 3, R than draw a line (Line Width 3 Red)
- Holding Ctrl while Drawing Line Makes Perfect Lines 0,45,90 degrees.
- eg. Press in order F, 4, W than draw a frame (Frame Width 4 White Color)
- eg. Press in order P,3,Y . Now you are in Pen Mode draw freehand (Pen 3 Width Yellow Color)
- Press TAB or S key to enter select mode. May be you want to reposition frames, Discs,Circles Lines etc. (Ctrl+A selects all objects, or Hold Ctrl to select multiple objects in Presentation Page).



MultiBoard Presentation

- eg. Press E, 4 to Erase in Freehand Mode.
(Erase Width 4)

Press / (Slash) to Toggle Liquid Mode

-If you Select some Objects-

- Ctrl+C to Copy to Clipboard
- Ctrl+Z, Ctrl+Shift+Z Undo and Redo. (BACKSPACE is also for undo)
- Ctrl+V to Paste in presentation Page
- Del to Delete
- Ctrl+ A to select All
- Ctrl+Shift+V to Paste In Place (Pastes Exact Position)

-If you Select Text Objects-

- Press + or - to Resize up / down fontsize
- Del to Delete
- Ctrl+ A to select All
- Ctrl+Shift+V to Paste In Place (Pastes Exact Position)

Frequently Asked Questions

Q: How to duplicate a board ?

A:

- You must be in Presentation Mode (F1 Key)
- Page Should include some drawings or objects
- Press “Print Screen” Key duplicates current board to the end of board page
- If zoom is %100
Right Mouse Button + Swipe Mouse to Left to navigate next Board
Right Mouse Button + Swipe Mouse to Right to navigate prior Board.
If Board Page not exists new Blank Page will be created.

Q: How can I set font size of Text ?

A:

- You must be in Presentation Mode (F1 Key)
- Press T Key for Text Mode
- Draw a rectangle, rectangle height will be the font-size
- Press enter to add new text row (multi row)
- Press TAB or ESC Key to enter selection mode
- Select Text Objects
- Use 1,2,3.. 9 keys to resize 4 is 100% scale.
- or, Press + or - to resize font of selected Text Objecs

Q: How can I Haze Focus On Screen ?

A:

- You must be in Presentation Mode (Press F1 to Enter/Exit)
- Press H
- Draw a rectangle Zone
- Optionally Zoom In / Out using Mouse Wheel.
- Optionally Hold Right Mouse Click and Drag to Pan
- Press P, Y, 3 and draw Freehand (P,Y,3=Yellow Pen Width 3)

Frequently Asked Questions

Q: How to Insert Graphics ?

A:

- You must be in Presentation Mode (F1 Key)
- Press . (dot) Key.
- Select Graphics to be inserted
- Use 1,2,3.. 9 keys to resize 4 is 100% scale.
- Reposition Inserted Graphics via mouse
- Press P for Pen Mode.
- Click Once to bake the Graphics.



Frequently Asked Questions

Q: For whom CreaLesson For ?

A:

- All inclusive Kit for video tutors, Youtubers, Digital Video Teachers, Educators serving for Kindergartens, Universities and Academies. A must be app for digital teachers.”

Q: How can I set font size of Text ?

A:

- You must be in Presentation Mode
- Press T Key for Text Mode
- Draw a rectangle, rectangle height will be the font-size
- Press enter to add new text row (multi row)
- Press TAB Key to enter selection mode
- Select Text Objects
- Press + or - to resize font of selected Text Objecs

Q: How can I Haze Focus On Screen ?

A:

- You must be in Presentation Mode (Press F1 to Enter/Exit)
- Press H
- Draw a rectangle Zone
- Optionally Zoom In / Out using Mouse Wheel.
- Optionally Hold Right Mouse Click and Drag to Pan
- Press P, Y, 3 and draw Freehand (P,Y,3=Yellow Pen Width 3)



Frequently Asked Questions

Q: Is Pro License for One PC ?

A: Nope, License is for per User. You can use on different Windows PCs.
(Note!: App only works if your user account have administrator rights)

Purchasing CreaLesson... **\$0+**

yourname@gmail.com

DEKSTOP-FI4BRO|THERLUI

Get

rights reserved.

SECURED BY GUMROAD

English

Intel(R) Core(TM) i7-6500U CPU @ 2.50GHz

Memory (RAM): 16.0 GB

System type: 64-bit Operating System, x64-based processor

Pen and Touch: No Pen or Touch Input is available for this Device

Computer name, domain, and workgroup settings

Computer name: DESKTOP-FI4...

Full computer name: DESKTOP-FI4...

Computer description:

Workgroup: WORKGROUP

Windows activation

November 2, 2019

CreaLesson

Download

Your license key:

28236D7F-0BD7499C-A94F1A32...

Spread the word! License key: 28236D7F-0BD7499C-A94F1A32...

View receipt

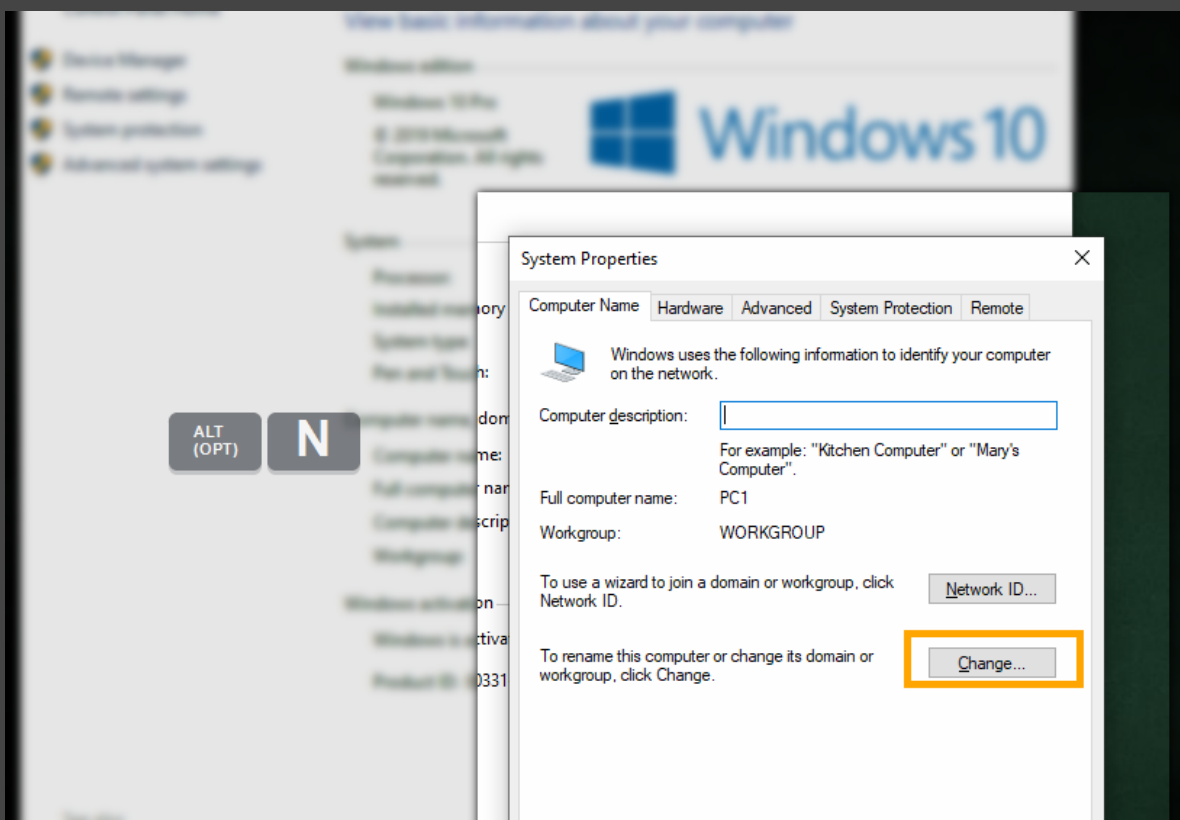
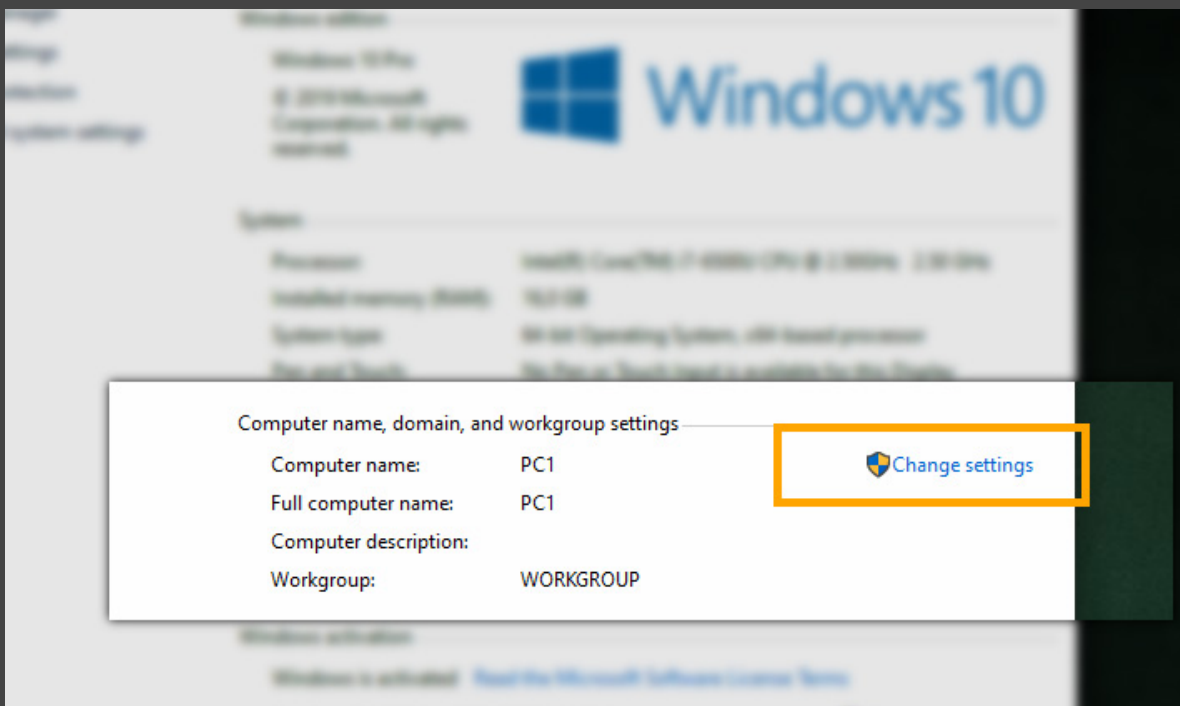
Need an...

Frequently Asked Questions

Q: Computer License Registration Failed. What should I do know ?

A:

- You have to set Computer Name. To do this :
- Right Click on “My Computer Icon” On Desktop.
- Properties > Change Settings > Change
- (Computer Name should be exactly same as you entered to Gumroad License Process) case sensitive!



SHORTCUTS

-While Presentation is On- (Press F1)

- Mouse Wheel Up / Down to zoom in and out
- Middle button to Zoom out to %100 immediately
- Right Mouse to Pan (scroll if your zoom is bigger than 100%)
- . (dot) = to Insert Graphics
- , (comma) = Color Pick
- BACKSPACE Key = for Undo (also Ctrl+Z)
- F = for Frame Mode
- P = for Pen Mode
- K = Chorcoal Pen
- < = Crop Tool
- T = for Text Mode
- D = for Disc Mode (Filled Circle)
- i = for Circle Mode
- C = for Case Mode(Filled Frame)
- S or Tab Key=for Select mode (ESC if you are in Text Editing)
- W = White, B = Black, U = Blue, O = Orange, A = Aqua, Y = Yellow, N = Neon
- Numpad + - for set of custom pen size. (also for resizing selected objects,graphics,texts,frames..etc)
- Keys 1,2,3,4,5 are for thin tick pen size (or Selected Objects Width)
- Text becomes as larger as you draw rectangle boundary.
- F1-F8 for quick color change in text mode. Numpad * or / is to set matte or liquid mode (mimics semitransparent marker pens)
- if you are in presentation mode ((with F1) and zoom is %100 right mouse+swipe left and right makes a new empty blackboard to draw free or swipes exists pages up and down.
- Ctrl+Shift+[U=blue] = board to dark blue
- Ctrl+Shift+[W=white] = board to white
- Ctrl+Shift+[B=black] = board to dark gray
- Ctrl+Shift+[G=green] = board to dark green
- Ctrl+BACKSPACE = Load Desktop Wallpaper
- Ctrl+Shift+BACKSPACE = Set As Desktop Wallpaper
- Ctrl+G = Toggle Ghost Mode
- Ctrl+D = Duplicate Page
- Ctrl+Del = Delete Page